



Introducing the Deluxe Profile Workstation with SH30 Panel

Deluxe Profile Workstation with SH30 Panel Screen are designed to maximise space and boost productivity in any workplace. Available in three standard top sizes, each features a handy scallop for easy cable access and recessed leg for full legroom, making them ideal for long workstation runs. The 30mm T SH Panel Screen, in either black or grey upholstery, provides added user privacy while maintaining a modern aesthetic.

Choose from single-sided or back-to-back configurations to suit your office layout. All models are offered in three sizes, two frame colours, and two worktop colours, ready for immediate delivery

Description

- Black or White Frame
- 60mm x 30mm Profile Leg
- Dual Cross Bar for added Stability
- Adjustable Leveling Feet
- Natural White or Natural Oak Worktop
- EO Enviroboard Melamine work surface with rear Cable scallop
- Partition Black with White Frame or Grey with Black Frame
- SH30 Partition
- AFRDI Certified
- 5 Year Warranty



Dimensions

Worktop

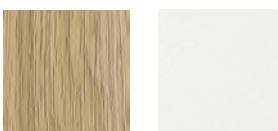
- 1200mm W x 750mm D
- 1500mm W x 750mm D
- 1800mm W x 750mm D

Screen

- 1200mm W x 425mm H
- 1500mm W x 425mm H
- 1800mm W x 425mm H

Colour

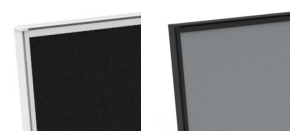
Top Finishes



Frame Colour



SH30 Panel



Single Sided Configurations



1 person



2 person



3 person



4 person



5 person

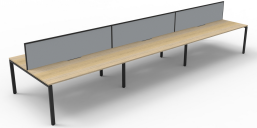
Double Sided Configurations



2 person



4 person



6 person



8 person



10 person

90 degree



4 person

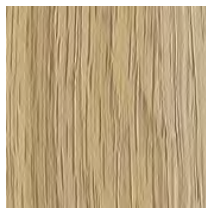
120 degree



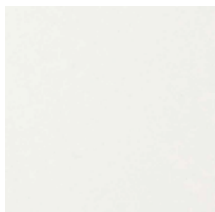
3 person

Colours

WORKTOP

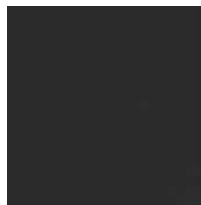


natural oak



natural white

FRAME



black

white

SH30 SCREEN



black upholstery



grey upholstery